

Metropolis Newsletter # 9

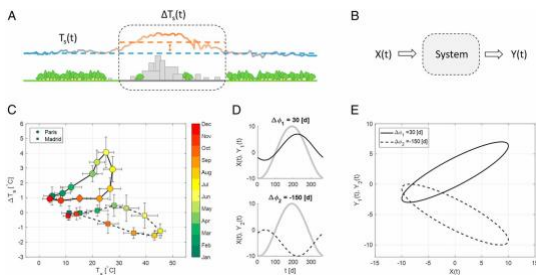
Campus News



The Hidden Feats That Built New York's Towering Skyscrapers - The New York Times

The ingenuity of engineers helped build landmarks like Black Rock and the new supertalls. Our critic takes a virtual tour with Guy Nordenson. Credit...Vincent Tullo for The New York Times By ...

www.nytimes.com



Seasonal hysteresis of surface urban heat islands | PNAS

Urban heat islands represent a major threat to public health with implications for energy consumption and climate adaptation policies. A ubiquitous feature in the seasonality of surface urban heat islands (SUHIs) is distinctive hysteric cycles between urban and rural surface temperature that still await a general explanation.

... www.pnas.org



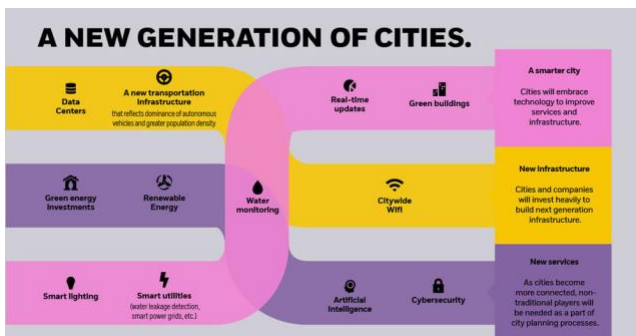
Indian Chamber of Commerce

[Welcome! You are invited to join a webinar: Reimagining India: Cities in the post-Covid World. After registering, you will receive a confirmation email about joining the webinar.](#)

National and International News



[The Harsh Future of American Cities - GEN](#)
In the Middle Ages, European city dwellers had one way of avoiding their centuries-long waves of plagues: stay inside and hope for them to go away...
gen.medium.com



[An Investing Megatrend: How Rapid Urbanization is Shaping the Future - Visual Capitalist](#)

By 2050, there will be 2.5 billion more people living in cities than today. How is rapid urbanization set to impact investors and the global economy?

www.visualcapitalist.com



[What happens to all the old wind turbines? - BBC News](#)

The problem is significant amounts of energy are needed to activate the pyrolysis, which might limit its environmental usefulness. It has mainly been done at a laboratory scale.

www.bbc.com



[The Coronavirus Shows It's Time To Remake The American City | HuffPost](#)

Cities across the U.S. and world are closing streets to traffic in response to the pandemic, offering a glimpse of a world where cars are no longer king. Like much of California, the city of Oakland has been under a shelter-in-place order since March, leaving its population of around 430,000 few ...

www.huffpost.com



[The farms appearing beneath our cities - bbc.com](#)

The question of what you can grow, and where, is a matter of economics. Plants take in carbon dioxide, and use light energy to convert it into biomass.

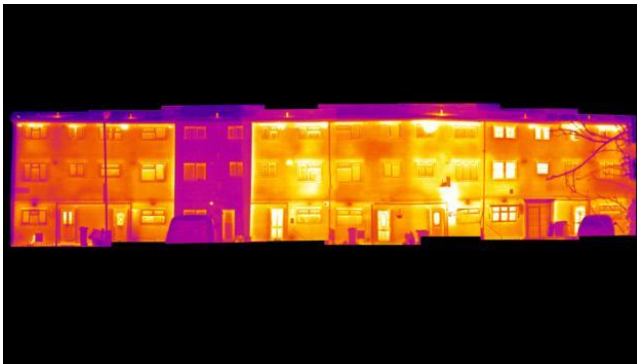
www.bbc.com



It's Time for the '15-Minute City'

In her re-election campaign, Mayor Anne Hidalgo says that every Paris resident should be able to meet their essential needs within a short walk or bike ride.

www.citylab.com



[Can we heat buildings without burning fossil fuels? - BBC Future](#)

The converter is a thin plastic pipe filled with water, that switches back on itself in a tight zigzag, and is connected to a heat pump above ground.

www.bbc.com



What We Know About Density and the Spread of Coronavirus

What do we know so far about the types of places that are more susceptible to the spread of Covid-19? In the U.S., density is just the beginning of the story.

www.citylab.com

If you received this letter as a forwarded email and you would like to subscribe to the Metropolis Project email list, used to distribute this newsletter and more, request to be added by emailing metronews@princeton.edu.